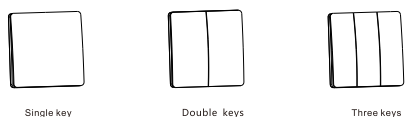


**Product Description**

The S2 series switch is a push button style kinetic switch that uses micro-energy acquisition technology without a battery. Can pair with controllers to work. If it is paired with a dimming controller, you can keep press to dim lights.

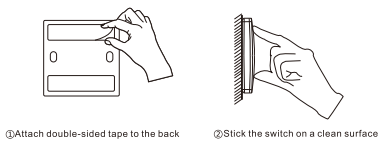


- Product Parameters
- Product Series: S2 Series
- Number of keys: 1-3 keys
- Working Frequency: 433MHz
- Waterproof Level: IP67
- Executive Standard: Q/EBL01-2018
- How to use - Pairing with Wireless Receiving Controller
- Switch Type: Push button
- Power Mode: Self-powered(No battery)
- Working Temperature: -20°C~+55°C
- Control Distance: 80m (outdoor) 25m (indoor)

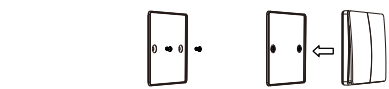
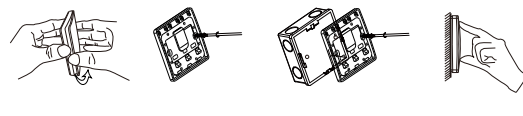
Note: The effective distance data is measured by Lab and it will vary due to the changes of the environment in the actual use.

**Switch Installation**

•Method 1: Use the double-sided adhesive tape inside the package to paste the switch on the stable, smooth and clean surface such as clean glass surface, marble, tile surface.



•Method 2: Carefully open the switch panel as shown in the figure, and fix the switch on the wall by the screws or fix the switch on the traditional 86 type switch box by cross plate.



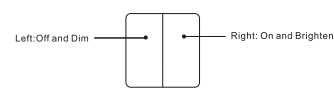
Optionally, the magnetic base can be taped or screwed to the wall and the switch magnetized to the base.

**Pair with the controller**

The S2 series switches need to be paired with the wireless controller. The typical pairing method is to press and hold the controller "pairing key" for about 3 seconds, let go when the indicator light flashes, and then press a button of the S2 switch once (do not press quickly or continuously). The indicator light goes off, which means that the pairing is successful. After the pairing is successful, you can press the switch button to turn on/off the controller. If the controller is a dimmable and the dimming mode is on, long press on the paired button to circularly dim the brightness and keep the brightness of last time when it is on again.

**Directional pairing between two-gang switch and controller**

In order to meet the user's habits of the switch and to ensure that the multiple controllers can be turned on and off at the same time in the one-to-multiple mode, we design the directional pairing mode on a two-button switch. Pairing The typical pairing method is to press and hold the pairing key on the controller for about 3 seconds and let go when the light is flashing. Then press one of the S2 double-button switches four times (in 1 seconds), the indicator light goes off, which means pairing is successful. After directional pairing is successful, the left button can only turn off light, and the right button can only turn on light. Long press the left button can only dim, long press the right button can only brighten



Note: Only double key switch

**Troubleshooting**

① Dropping or other reason causing the key to fall off from the switch base. Remedy: After confirming that the plastic is not broken, press the plastic button and press it back to the base.

② After pairing is successful, pressing the switch button can only turn off lights, or can only dim, but cannot brighten lights. Remedy: Press and hold the "Pairing Key" on the controller for about 10 seconds. The indicator light flashes, until it goes out, then pair it again. (Press only one time during pairing, and do not press the switch many times quickly)

**Other instructions**

① S2 series switch is waterproof switch. Protection class is IP67. It can only prevent the damage of switch from water spray in the daily life. Don't install the switch underwater or submerge it under water for long time.

② Directional pairing only supports two-button switches. If one-button or three-button switches are direction paired, they may only can turn Off and cannot turn on lights.

③ Each button of the switch can be paired with multiple controllers to form one-to-multiple controls. If you want to use the main control and the distance is long, it is suggested to use directional pairing.

**CERTIFICATE INSPECTED**