

使用说明
S2系列动能开关

产品介绍

S2系列开关是回弹式的动能开关，使用微能量采集技术，无需电池。该系列开关可和无线接收控制器进行配对使用，进行开关控制或者调光控制。



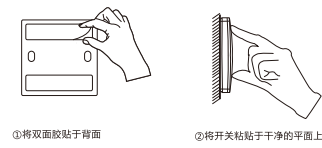
产品参数

产品系列: S2系列
按键数量: 1-3键
工作频率: 433MHz
防护等级: IP67级
执行标准: Q/EBL01-2018
使用方式: 与无线接收控制器配对使用
注: 有效距离数据为实验室测得, 实际使用中会因环境变化而有所不同

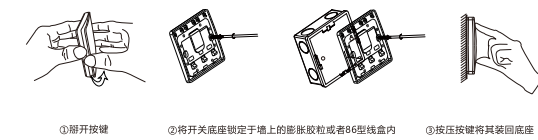
开关类型: 回弹式
电源模式: 微能量采集自发电
使用温度: -20°C ~ +55°C
控制距离: 80m(室外) 25m(室内)

开关安装

•方式一: 使用包装内附带的双面胶将开关粘贴于玻璃面、大理石面、瓷砖面等稳固的、洁净的表面。



•方式二: 按下图方式将开关的按钮翻开, 使用自攻螺丝将开关的底座锁定于墙上的膨胀胶粒或者86型线盒内, 然后用力按压将按钮装回底座。



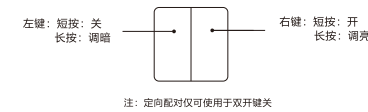
与控制器配对

S2系列开关需要与无线接收控制器配对使用, 配对方式为按住控制器上的“配对键”约3秒, 在指示灯闪烁的时候松开按键, 然后按下S2开关的一个按键一次(勿连续快速地按), 指示灯熄灭表示配对成功, 即可使用该按键控制该无线接收控制器。(更详细配对步骤, 请参考无线接收控制器说明书)
若控制器为可调光控制器, 且打开可调光模式, 可长按已配对的开关按键对灯光的亮度进行循环调节, 在下次开灯的时候会保持上次关灯时候的亮度。

双键开关与控制器定向配对

为了符合用户对传统使用习惯, 并保证在一控多模式下多个控制器的开和关的同步, 我们给S2系列双键开关定义了定向配对模式。

定向配对的配对方式为按住控制器上的“配对键”约3秒, 在指示灯闪烁的时候松开按键, 此时按下S2双键开关的任意一个按键四次(在1秒内), 控制器指示灯熄灭表示配对成功, 此时, 按下开关左键为关, 按下开关右键为开, 若用于调光, 长按左键调暗, 长按右键调亮。



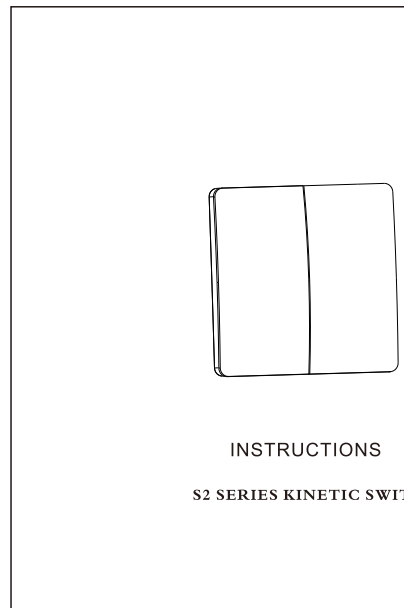
故障排除

- ①跌落导致按键脱离底座
排除方法: 将按键放在底座对应位置, 用力按压按键, 将其装回底座。
- ②配对成功后, 按开关按键不能控制控制器, 或者调暗之后不能调亮
排除方法: 长按控制器上“配对键”约10秒, 在指示灯经过闪烁之后直到熄灭, 然后重新配对使用。(配对时只需按一次开关按键)

其他说明

- ①S2系列开关为防水开关, 防护等级为IP67级, 能在户外安装使用和防止生活泼溅, 但请勿将开关安装于水下使用, 或者使用于能长期浸水处。
- ②定向配对只支持双键开关, 单键或者三键开关定向配对后将不能使用, 需重新配对。
- ③开关可以和多个控制器配对, 形成一控多模式, 在一控多模式下, 建议使用双键开关进行定向配对, 具体请参考无线接收控制器使用说明书。

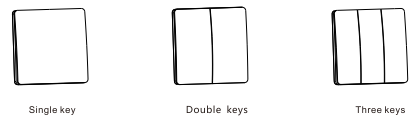
合格证/已检验
Certificate / Inspected



INSTRUCTIONS
S2 SERIES KINETIC SWITCH

Product Description

The S2 series switch is a push button style kinetic switch that uses micro-energy acquisition technology without a battery. Can pair with controllers to work. If it is paired with a dimming controller, you can keep press to dim lights.



Product Parameters

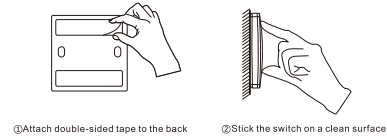
Product Series: S2 Series
Number of keys: 1-3 Keys
Working Frequency: 433MHz
Waterproof Level: IP67
Executive Standard: Q/EBL01-2018
How to use: Pairing with Wireless Receiving Controller

Switch Type: Push button
Power Mode: Self-powered(No battery)
Working Temperature: -20°C ~ +55°C
Control Distance: 80m (outdoor) 25m (indoor)

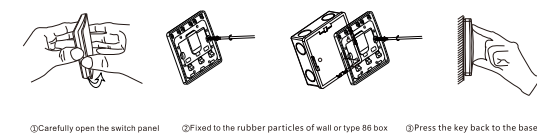
Note: The effective distance data is measured by Lab and it will vary due to the changes of the environment in the actual use.

Switch Installation

•Method 1: Use the double-sided adhesive tape inside the package to paste the switch on the stable, smooth and clean surface such as clean glass surface, marble, tile surface.



•Method 2: Carefully open the switch panel as shown in the figure, and fix the switch on the wall by the screws or fix the switch on the traditional 86 type switch box by cross plate.

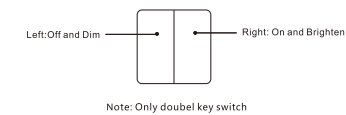


Pair with the controller

The S2 series switches need to be paired with the wireless controller. The typical pairing method is to press and hold the controller "pairing key" for about 3 seconds, let go when the indicator light flashes, and then press a button of the S2 switch once (do not press quickly or continuously). The indicator light goes off, which means that the pairing is successful. After the pairing is successful, you can press the switch button to turn on/off the controller. If the controller is a dimmable and the dimming mode is on, long press on the paired button to circularly dim the brightness and keep the brightness of last time when it is on again.

Directional pairing between two-gang switch and controller

In order to meet the user's habits of the switch and to ensure that the multiple controllers can be turned on and off at the same time in the one-to-multiple mode, we design the directional pairing mode on a two-button switch. Pairing The typical pairing method is to press and hold the pairing key on the controller for about 3 seconds and let go when the light is flashing. Then press one of the S2 double-button switches four times (in 1 seconds), the indicator light goes off, which means pairing is successful. After directional pairing is successful, the left button can only turn off light, and the right button can only turn on light. Long press the left button can only dim, long press the right button can only brighten



Troubleshooting

- ①Dropping or other reason causing the key to fall off from the switch base.
Remedy: After confirming that the plastic is not broken, press the plastic button and press it back to the base.
- ②After pairing is successful, pressing the switch button can only turn off lights, or can only dim, but cannot brighten lights. Remedy: Press and hold the "Pairing Key" on the controller for about 10 seconds. The indicator light flashes, until it goes out, then pair it again. (Press only one time during pairing, and do not press the switch many times quickly)

Other instructions

- ①S2 series switch is waterproof switch. Protection class is IP67. It can only prevent the damage of switch from water spray in the daily life. Don't install the switch underwater or submerge it under water for long time.
- ②Directional pairing only supports two-button switches. If one-button or three-button switches are direction paired, they may only can turn Off and cannot turn on lights.
- ③Each button of the switch can be paired with multiple controllers to form one-to-multiple controls. If you want to use the main control and the distance is long, it is suggested to use directional pairing.

CERTIFICATE
INSPECTED