

INSTRUCTIONS
S3 SERIES WIRELESS KINETIC SWITCH

Product Description

The S3 series switch is a push button style kinetic switch that uses micro-energy acquisition technology without a battery. Can pair with controllers to work. If it is paired with a dimming controller, you can keep press to dim lights.



Single key
(press unilateral)



Four keys
(press bilateral)

• **Product Parameters**

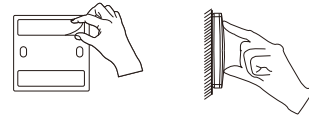
Product Series: S3 Series
Number of keys: 2/4 keys
Control Distance: 80m (outdoor) 25m (indoor)
Working Temperature: -20°C~+55°C
How to use : Pairing with Wireless Receiving Controller

Switch Type: Push button
Power Mode: Self-powered(No battery)
Frequency: RF 433MHz

Note: The effective distance data is measured by Lab and it will vary due to the changes of the environment in the actual use.

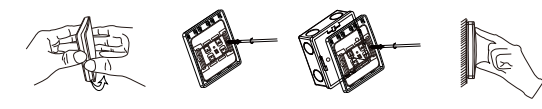
Switch Installation

• **Method 1:** Use the double-sided adhesive tape inside the package to paste the switch on the stable, smooth and clean surface such as clean glass surface, marble, tile surface.



①Attach double-sided tape to the back ②Stick the switch on a clean surface

• **Method 2:** Carefully open the switch panel as shown in the figure, and fix the switch on the wall by the screws or fix the switch on the traditional 86 type switch box by cross plate.



①Carefully open the switch panel ②Fixed to the rubber particles of wall or type 86 box ③Press the key back to the base

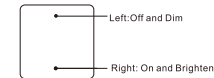
Pair with the controller by ordinary method

The S3 series switches need to be paired with the wireless controller. The typical pairing method is to press and hold the controller "pairing key" for about 3 seconds, let go when the indicator light flashes, and then press a button of the S3 switch once (do not press quickly or continuously). The indicator light goes off, which means that the pairing is successful. After the pairing is successful, you can press the switch button to turn on/off the controller. If the controller is a dimmable and the dimming mode is on, long press on the paired button to circularly dim the brightness and keep the brightness of last time when it is on again.

Pairing with controller by directional method

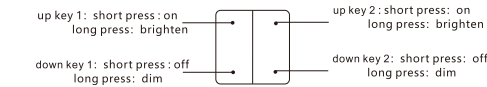
In order to meet the user's habits of the switch and to ensure that the multiple controllers can be turned on and off at the same time in the one-to-multiple mode, we design the directional pairing mode on S3 serials switch. Pairing The directional pairing method is to press and hold the pairing key on the controller for about 3 seconds and let go when the light is flashing. Then press one of the S3 serials switches four times (in 1 seconds), the indicator light goes off, which means pairing is successful.

After directional pairing is successful, the control way of S3 two keys switch : the left button can only turn off light, and the right button can only turn on light, long press the left button can only dim, long press the right button can only brighten.



Directional control way of S3 two keys switch

S3 four keys switch is divided into two separate groups, up key and down key are one group. Directional pairing method for two groups is the same. After pairing with directional method, control way of S3 four keys switch is that shot press up key to turn on, and shot press down key to turn off. About the dimming, long press up key to brighten, and long press down key to dim.



Directional control way of S3 four keys switch

Troubleshooting

1. Dropping or other reason causing the key to fall off from the switch base.
Remedy: After confirming that the plastic is not broken, press the plastic button and press it back to the base.
2. After pairing is successful, pressing the switch button can only turn off lights, or can only dim, but cannot brighten lights. Remedy: Press and hold the "Pairing Key" on the controller for about 10 seconds. The indicator light flashes, until it goes out, then pair it again. (Press only one time during pairing, and do not press the switch many times quickly)

Other instructions

1. Directional pairing only supports two-button or four-button switches. If one-button switches are directional paired, they only can turn off and cannot turn on lights. Please pair them again.
2. One switch can be paired with multiple controllers to form one-to-multiple control mode. If you want to use the one-to-multiple control mode, We suggest you to use the 2 gang switch directional pairing. Please refer to the wireless receiving and controller instruction.

CERTIFICATE
INSPECTED

SW1A9629EB010 S3-433版本开关说明书-中性 125g铜版纸印刷，成品尺寸：80*80mm