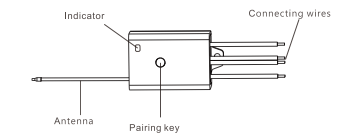


INSTRUCTIONS
MINI RECEIVING CONTROLLER

Product Description

The mini receiver controller can be paired with kinetic energy switch to control light on/off.

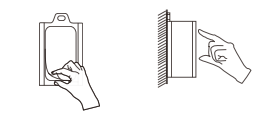
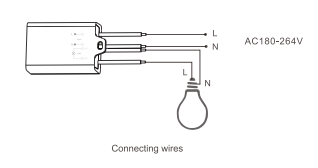


Product Parameter

Product Model: ERC902
 Product Name: Mini Receiving Controller
 Working Temperature: -20°C ~ 55°C
 Control Distance: 100m(outdoors), 30m(indoor)
 Rated Current: 3A
 Rated Power: LED 300W
 Working Voltage: AC 180-264V 50/60Hz
 Sensitivity: -110dBm
 Dimension: L52*W32*H19mm
 Wireless Communication: RF 433MHz
 Storage Capacity: Can store up to 10 wireless kinetic switch
 Executive Standards: EN61058-1; 2002+A2; 2008; GB 14536.1-2008

Note: The effective distance data is measure by Lab and it will vary due to the changes of environment in the actual use.

Connection and Installation



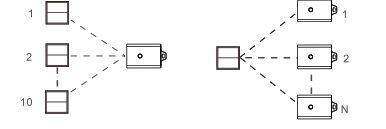
Installation method 1: Use the double-sided adhesive tape inside the package to paste the controller on clean surface



Installation method 2: Fix into expansion screw in the wall

Combination Method

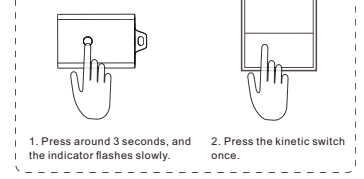
This controller can be paired with kinetic energy switch freely, can from two modes: one control multi and multi control one.



Ordinary

1. Connect the controller's input to the supply, press the controller "pairing button" around 3 seconds, release when indicator light flash slowly (flash 1 time per second).
2. Press the selected kinetic energy switch once (do not press several times continuously), then indicator is off, means the pairing is successful.
3. If need to pair with multiple switches, repeat the above procedure. Please note one controller can be paired with 10 switches maximum.
4. After the pairing is successful, you can press the kinetic switch to control the controller. Without loads, the indicator light is on, means the controller is working, vice versa.

Ordinary Pairing Method

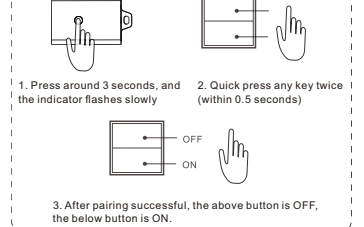


Combination Method

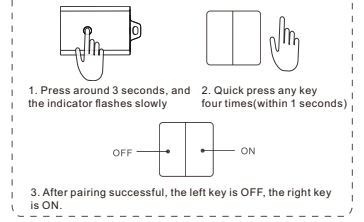
In order to meet the user's usage habit of switch and to ensure the synchronization of one control multi mode, we define the directional pairing mode. Directional pairing only support rocker type switch and 2/4/6 keys push button switch.

1. Connect the controller's input with the power supply, press the controller "pairing button" around 3 seconds, release when indicator light flash (flash 1 time per second).
2. For rocker type switch, quick press the switch key twice (within 0.5 second). For push button switch, quick press any key 4 times (within 1 second), then the indicator light goes off, means the pairing is successful.
3. After pairing is successful, for rocker type switch, pressing above button is off, pressing below button is on. For push button switch, left and right button as a group, pressing the left key is off and pressing the right key is on.

Directional Pairing of Rocker Type Switch

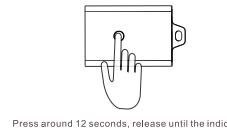


Directional Pairing of Push Button (Only supports 2/4/6 keys)



Clear Pairing

1. If you need to clear pairing of switch and controller, long press the controller "pairing button" around 12 seconds, the indicator light will flash from slowly - quickly - stay still - off. After indicator light is off, means all pairing switch information is cleared. If you need use this controller again, please pair again.

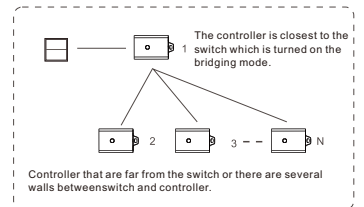


Bridging Mode

To increase the distance of control and the ability to penetrate the wall, we have defined the Bridging Mode function. The bridging mode is recommended in on control multi mode.

1. First pair the switch with all controller. (Using Directional Pairing)
2. As shown in the figure, select controller 1 that is closest to the switch and open the controller Bridging Mode.
3. Press and hold the "Pairing key" on the controller 1 for about 7 seconds. The indicator light flashes from slowly to quickly. Release the button. Wait a few seconds, the controller's indicator flashes once every two seconds, bridging mode is turn on.

4. After the bridging mode is turned on, the controller will forward and enhance the signal, increase the distance of control and the ability to penetrate the wall.



CERTIFICATE INSPECTED