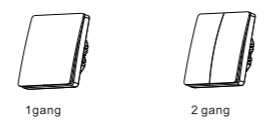


Single-Live Wall Switch
INSTRUCTIONS

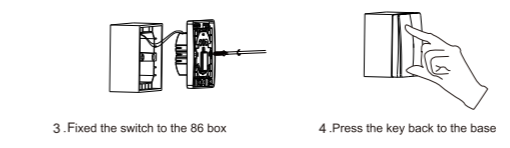
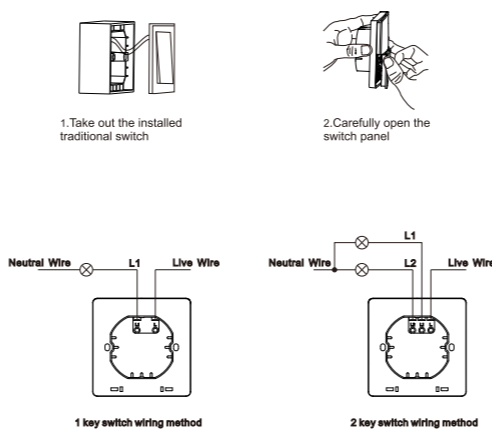
Product Description
The ESL2 Single -Live Wall Switch can directly replace the original traditional switch, and can realized the function of dual-control multi-control or one-control-multiple with the use of Ebelong wireless kinetic switch.



Product parameters
Product series: ESL2
Number of buttons: 1-2
Rated power: 600W / each circuit
Working frequency: 433MHz
Control distance : 80m (outdoor) 25m (indoor)
Executive standard: Q/EBL01-2018
Use method : Pair with wireless kinetic energy switch
Storage capacity: Each circuit can be paired with up to 10 wireless kinetic switch keys
Note: The control distance data is measured by the laboratory, and it may vary due to environmental changes during actual use.

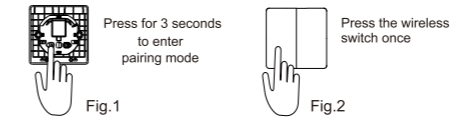
Switch type: Push button type
Power mode: Single -Live line power supply
Applicable voltage: 100-240V 50/60Hz
Operating temperature: -10 ° C ~ +55 ° C

Switch Installation

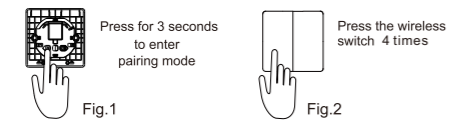


Switch Pairing Method
Each channel of the Single -Live Wall Switch can be operated by a maximum of 10 separate switches. A switch can pair an unlimited number of Switches.

Original Pairing
Physical Wireless Switch Method
1. Press the corresponding function button for 3 seconds and the indicator light begins to flash slowly. Release the button to enter the single pairing states. (Fig.1)
2. Press the wireless kinetic energy switch and the indicator light of the Switch will go out, which means that the pairing is successful. (Fig.2)



Directional Pairing
In order to meet the user's habit of using traditional switches, and to ensure the synchronization of the states of multiple ESL2 in one-control-multiple mode, the directional pairing is defined. This pairing method only supports double-buttons four-button and six-buttons rebound switches. The pairing methods are as follows:
Physical Button Method
Press the button for 3 seconds, the light will flash slowly, the ESL2 enters the state of "waiting for pairing". At this time, press any button of the wireless kinetic switch for 4 times (within 1 second), and the light will turn off, it means that the pairing is completed.
Note: After the pairing is successful, the left and right buttons of the rebound switch are a group, short press the left button is to turn off, and short press the right button is turn on.



Clear Pairing Information
Physical Button Method
To remove the Switch stored pairing information press the function button for 12 seconds until the indicator light goes out - the pairing information will be cleared.

Bridge Mode
Press pairing button on the Switch for 7 seconds. LED changes from flashing slowly to flashing quickly (twice a second). When flashing quickly, release your hand and the Switch enters bridge mode. To disable the bridge mode, repeat the preceding steps.
Precaution
1. The wiring must be done in accordance with the method of the installation illustrated.
2. Please note the maximum load of an individual Switch. Exceeding this maximum will result in damaging the Switch.
3. Do not short-circuit, it will cause permanent damage to the Switch.
4. The Switch will remain "OFF" after a power cut, saving energy, reducing fire risk and protecting your appliances.
5. Damage caused by incorrect installation and operation are not covered under warranty.

Troubleshooting
1. If pairing does not work first check if the indicator is lit. Re-pair in case the pair is lost after power failure.
2. If the Switch does not respond check the LED indicator. If this does not light check the power supply.

