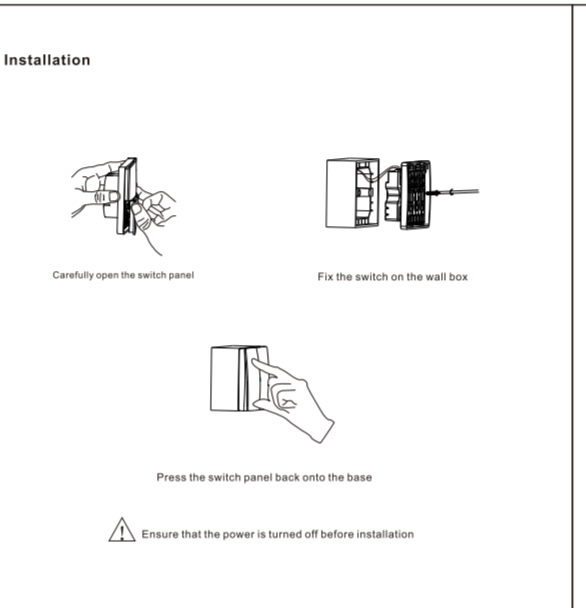
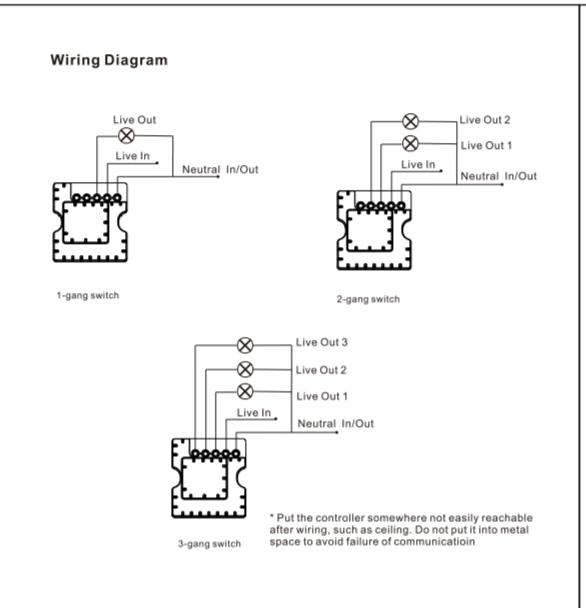


EWS Series Neutral Live line Switch  
Wi-Fi Version  
User Manual

**Introduction**  
EWS series neutral live line switch has Tuya Wi-Fi module inside and is able to power on/off a light or set scenario control by Tuya APP or Wireless Kinetic Switch.

**Specification**  
Power mode: Live Neutral line power supply  
Rated voltage: 100-240V~ 50/60Hz  
Rated power: LED 600W  
Frequency: Wi-Fi & RF 433MHz  
Work Temperature: -20°C~+55°C  
Work range: 50m(outdoor) 30m(indoor)  
Sensitivity: 110dBm  
Dimensions: L86\*W45\*H86mm  
Control channels: 1/2/3  
Pairing capacity: 5 each channel

\*Work range comes from laboratory test results. The actual range in practical use might vary due to environmental difference.



**Smart Device APP Download**

The free Kinetic Switch APP is required to operate your WiFi controller. Ensure your iOS/Android device is connected to the internet using a Wi-Fi network.

- Open the App Store/ Google Play on your phone.
- Search for "Kinetic Switch" in the App store or Google Play
- Download the Kinetic Switch App to your phone.

**Device Pairing with the APP:**  
The initial setup must be performed using your 2.4GHz Wi-Fi network (5GHz Wi-Fi is not supported). Both the phone and the controller must connect to your network.

- After downloading the APP follow the prompts to register the account.
- The switch enters the configuration state by default after powering up. If it appears that the device cannot be added successfully, you can disassemble the wall switch key panel to make sure whether there is an indicator in the fast flash, if the indicator is not in the fast flash state (single key switch to see the middle key indicator, dual- and triple-button switches view the leftmost button indicator), then manually long press the key for 10 seconds (Press and hold the center button for one-button switches and the leftmost button for two- and three-button switches). The key indicator will change from slow flashing to still and then let go, wait for 3 seconds, the indicator will enter the fast flashing state, that is, the wall switch enters the configuration mode, and then follow the below steps to add devices.

- Open the "My Home" page of the Kinetic Switch App, and click "+" on the upper right of the page.
- Click "Light Control" select "Three Channel Controller (RF+Wi-Fi)" follow the instructions to operate it.
- After successfully adding the receiver to the APP you can find the device in the "My Home" list. Lights can be controlled through the App from wherever in the world and smart scenes can be set.

Using Amazon Alexa/Google Home to control your Controller

Note: We would recommend naming the devices in your Kinetic Switch App something that is easy for Alexa or Google Home to understand. In order to integrate the Kinetic Switch app with Amazon Alexa/Google Home you need:

- Amazon Alexa APP / Google Home APP
- Amazon Alexa / Google Home account (users need to register their own account)
- Echo, Echo Dot, Tap or other Amazon voice-operated devices.
- Google Home, Google Home Mini or other Google voice-operated devices.

**Enable Smart Life skill/action in your Alexa / Google Home APP**

Search for "Smart Life" skill and add it to the Alexa APP "Smart Home" skills. For Google Home search for "Smart Life" action and add it to Home Control. Enable the skill/action in your Alexa /Google APP and input the name and password used to register the Kinetic switch APP to link with Alexa/Google APP. Voice control can be used now to control the WiFi device such as: "Alexa/OK Google, turn on/off [kitchen light]"

Pairing with Wireless Kinetic Switch  
EWS series can form one switch control multi controllers or one multi switches control one controller. Both control way can be paired with two methods: Ordinary pairing and Directional pairing

**Ordinary Pairing Method**

① Select the bounded device in APP, click the Pair->Start Pair in the left bottom and

② Select the switch you want to pair in the following interface. And press the corresponding switch button to complete the pairing.

\* If fail to pair, check the indicator whether it is flashing. If it is not flashing, press and hold the function button for 3 seconds and release it button once it starts to flash.

If need to pair more switch to the controller, repeat the step 1 and 2. (The controller can pair up to 5 kinetic switch).

**Directional Pairing Method**

For 2-gang and 6-gang switch. One gang is only for on, one gang is only for off.

① Select the bounded device in APP, click the Pair->Start Pair in the left bottom and

② Select the switch you want to pair in the following interface. And press the corresponding switch button 4 times within one second to complete the pairing.

**Unpairing with Wireless Kinetic Switch**

Select the bounded device in APP, click the Pairing->Clear Pair in the left bottom and select the switch you want to clear in the following interface

(If fail to clear pair in APP, Press and hold the function button of controller for 12 seconds until the indicator light goes out. All the pairing information will be removed.)

**Others**

EWS series switch is able to set scenario control by Tuya APP or Wireless Kinetic Switch.

Certificate/Inspected